

FPC-H series

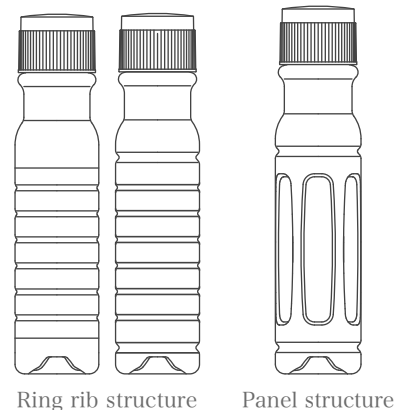
A new addition to the popular FPC Series: Heat-resistant PET dressing bottles!



Newly developed heat-resistant PET bottles

Three new heat-resistant bottles have been added to the FPC Series. Capable of withstanding heat sterilization and filling processes, the bottles offer improved preservation properties and are ideal for various products including salad dressing, sauce, and seasonings.

Two different structural options are available to suit specific needs. One has a "Panel" structure on the side of the bottle designed to enhance the bottle's resistance to decompression after filling, while the aim of "ring rib" structure is to create a larger flat area for labeling.

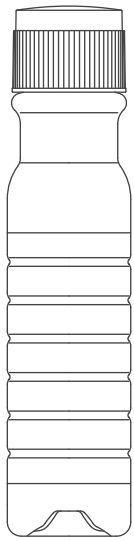


FPC-H series

New Heat-resistant PET bottles!

※1 “ISB” stands for “Injection stretch blow”

Material: PET
Molding method: ISB ※1

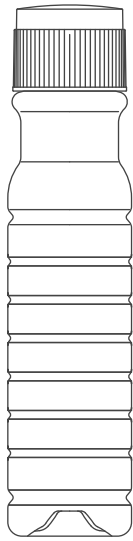


φ 44

FPC-200H

Number of ring ribs: 6
Heat-resistant temperature: 78°C

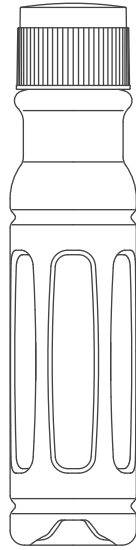
※ Semi-heat-resistant



φ 44

FPC-200H II

Number of ring ribs: 8
Heat-resistant temperature: 85°C

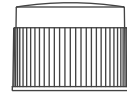


φ 45

FPC-200H III

Number of panels: 6
Heat-resistant temperature: 87°C

FPC Cap



— Colored Caps available on demand —

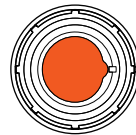
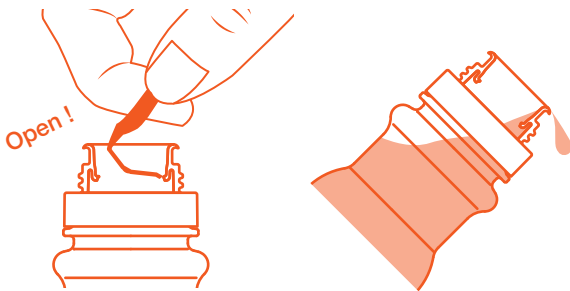
White, Black, Red, Orange, Green

※ Available colors

- Heat-resistant temperatures are based on TAKEMOTO's in-house evaluation. Heat-resistant temperatures and other characteristics of the bottle may vary depending on the conditions of use. Please be sure to conduct a trial with the specified filling method and requirements prior to commercial filling.
- Be sure to take the thermal expansion of contents due to hot filling into account when setting filling volumes.
- Decompression of the bottle may occur depending on the chemical properties of the contents and storage environment after filling.

Please contact us if any of the above is unclear.

■ Heat-resistant plug



Round orifice [(φ) 18.1 mm]

Large orifice size, ideal for thick and chunky products.

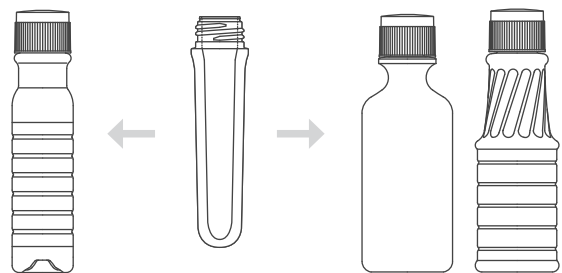
- Heat-resistant plug (Heat-resistant temperature : 87°C)
- Easy flow-control spout

※ Pull-ring plug with snap-on fitting.
※ Snap-on capping equipment is available.
Please contact us for details.

Bespoke bottle development with Takemoto

In the case of injection blow molding, standard preforms are available for use with bespoke bottle development. It is possible to create an exclusive PET bottle design with use of an existing preform and a newly made blow mold.

Initial costs are relatively low as the client only has to bear the cost of the blow mold.



Standard bottle

Standard preform

Bespoke bottle